

# Blok N Mesh Installation Guide

## Temporary Vehicle Sliding Gates Set

### Accessories



Nuts and Bolts & Cable Ties

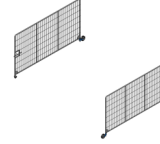


Ino BraceBlok Lifting Tool

### The components



Wheel and Bracket



Mesh Vehicle Gates



Standard Couplers



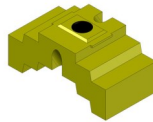
Dummy Tube



Guide Bracket



Anti-Lift Bracket



50kg BraceBlok



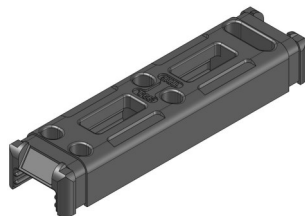
Mini Mesh Brace



Rubber Base

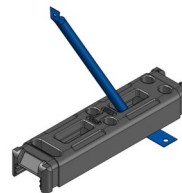
## The installation process

1



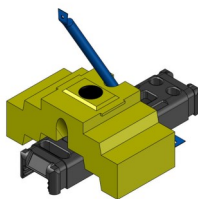
Position the first base at the intended starting point of the Sliding Gate.

2



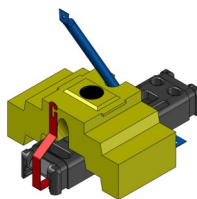
Fit Mini Mesh Brace in base.

3



Place 50kg BraceBlok in position using the BraceBlok Lifting Tool

4



Fit Anti-Lift Bracket into base

5



Fit Guide Bracket into left-hand hole in base

## The installation process – continued

6



Fit Dummy Tube into right hand hole in base

7



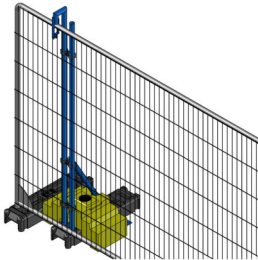
Fix Standard Couplers onto Dummy Tube and Guide Bracket

8



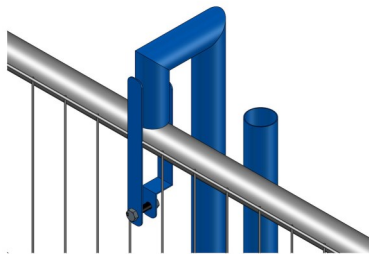
Place additional base

9



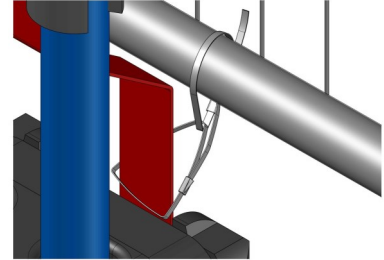
Fit Gladiator HD Panel into Guide Bracket and into additional base

10



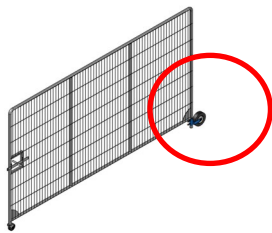
Secure panel with M8 x 25mm Hex Bolt and Nut

11



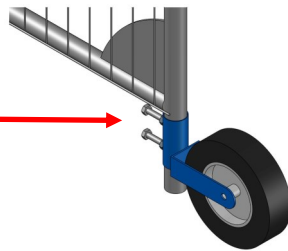
Secure panel to Anti-Lift Bracket With 2no Metal Cable-Ties

12



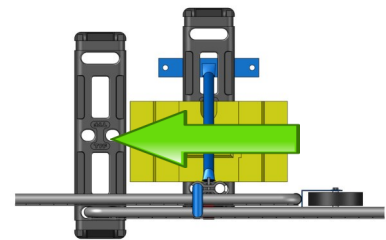
Prepare Male Gate Leaf

13



Fit 250mm Wheel and bracket to right hand leg of Male Gate panel

14



Feed Male Gate Panel into Guide Bracket

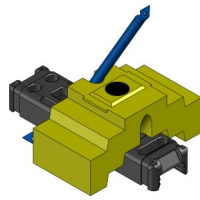
## The installation process – continued

15



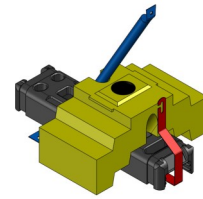
Fit 2nd Mini Mesh Brace in 2nd base.

16



Place 2nd 50kg BraceBlok in position using the BraceBlok Lifting Tool

17



Fit 2nd Anti-Lift Bracket into 2nd base

18



Fit 2nd Guide Bracket into right-hand hole in 2nd base

19



Fit 2nd Dummy Tube into left-hand hole in 2nd base

20



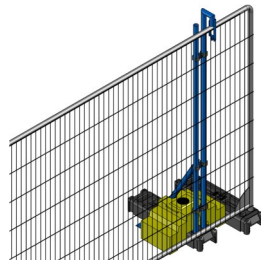
Fix Standard Couplers onto 2nd Dummy Tube and Guide Bracket

21



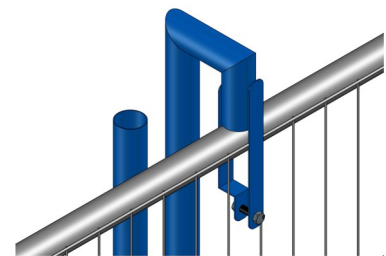
Place additional base next to 2nd base

22



Fit Gladiator HD Panel into 2nd Guide Bracket and into additional base

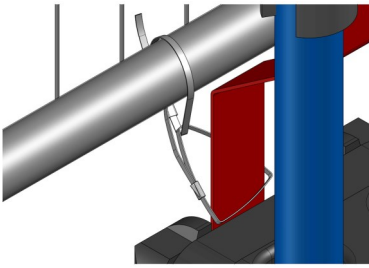
23



Secure panel with M8 x 25mm Hex Bolt and Nut

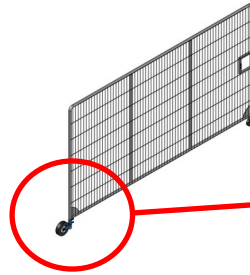
## The installation process – continued

24



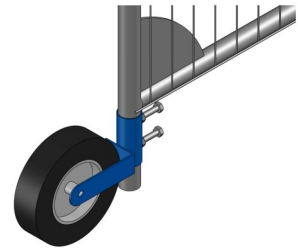
Secure panel to 2nd Anti-Lift Bracket with 2no Metal Cable-Ties

25



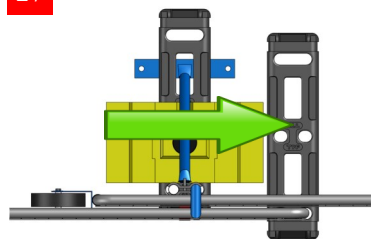
Prepare Female Gate Leaf

26



Fit 2nd 250mm Wheel and bracket to left hand leg of Female Gate panel

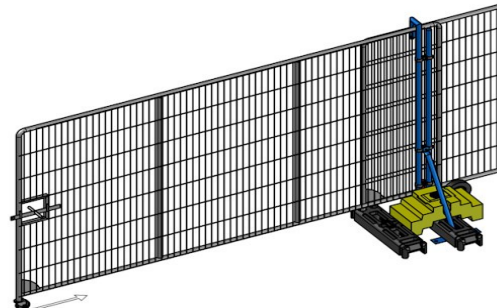
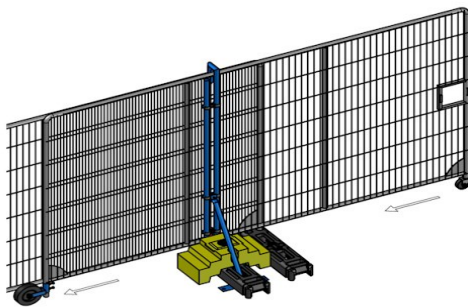
27



Feed Female Gate Panel into Guide Bracket



Make sure gates open and close freely and are able to lock. Adjust accordingly, if required.



Completed Unit

### SAFE HANDLING

It is recommended that panels and blocks be handled and installed by a minimum of 2 people.

Wherever possible, manual handling of the product should be avoided by the use of mechanical lifting equipment.

It is essential that every load is assessed prior to lifting to reduce the risk of injury.

All manual handling should be carried out in accordance with The Manual Handling Operations Regulations 1992 and later amendments.

**0870 950 5788 or [www.bloknmesh.com](http://www.bloknmesh.com)**